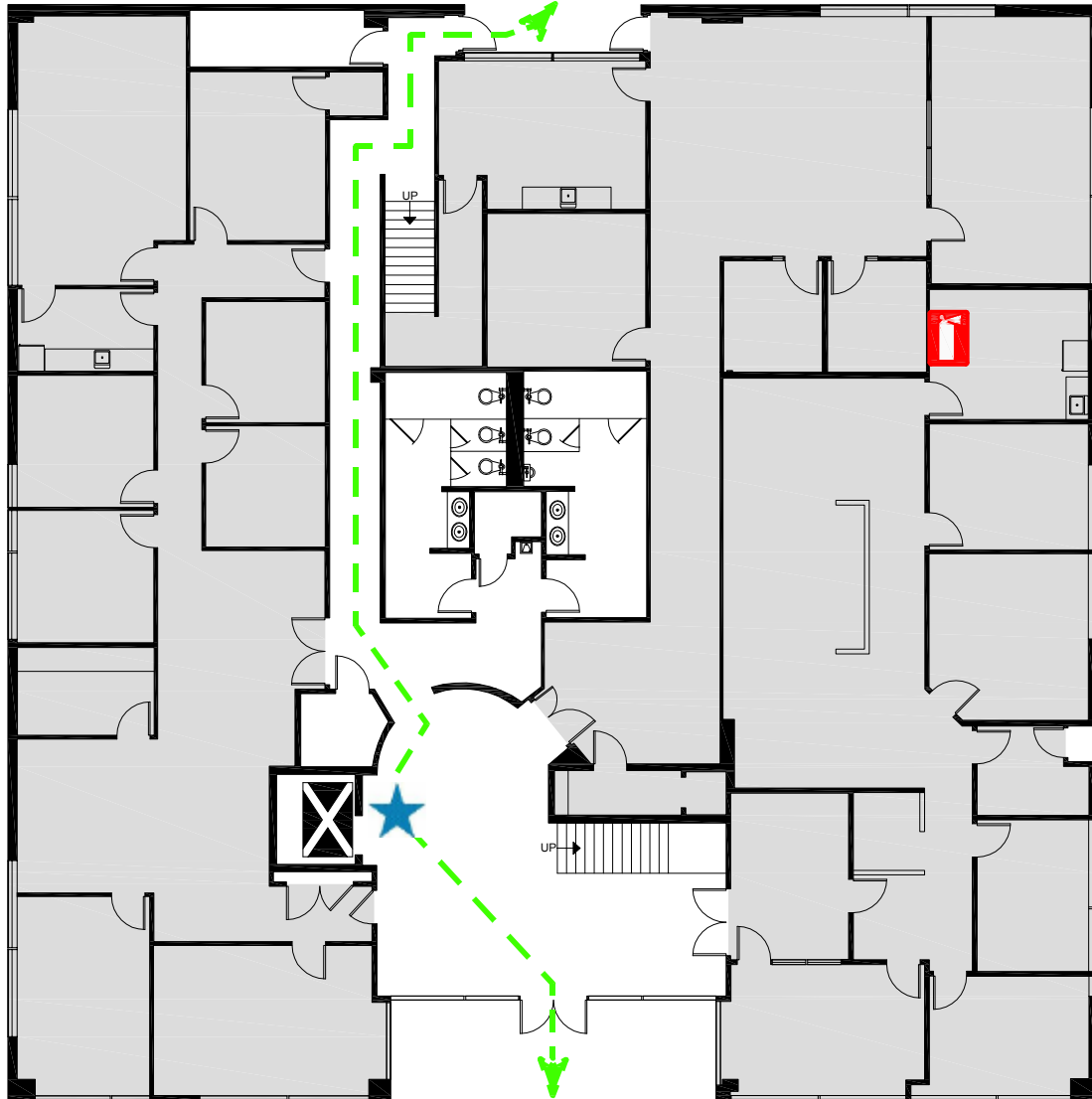
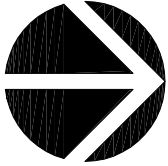


EVACUATION PLAN

1234 ANY ST.

1 st
Floor

EMERGENCY PHONE #: 911



 YOU ARE HERE

 STAIRWAY

 EXIT ROUTES

 ELEVATOR

 FIRE HOSE or
EXTINGUISHER



PERSONS WITH DISABILITIES

SHALL CALL 911 TO REPORT THEIR
LOCATION & PROCEED TO NEAREST
STAIRWELL & AWAIT ASSISTANCE.

FC FIRE CAB

 PULL BOX

ALL ALARMS - HORN SOUND

